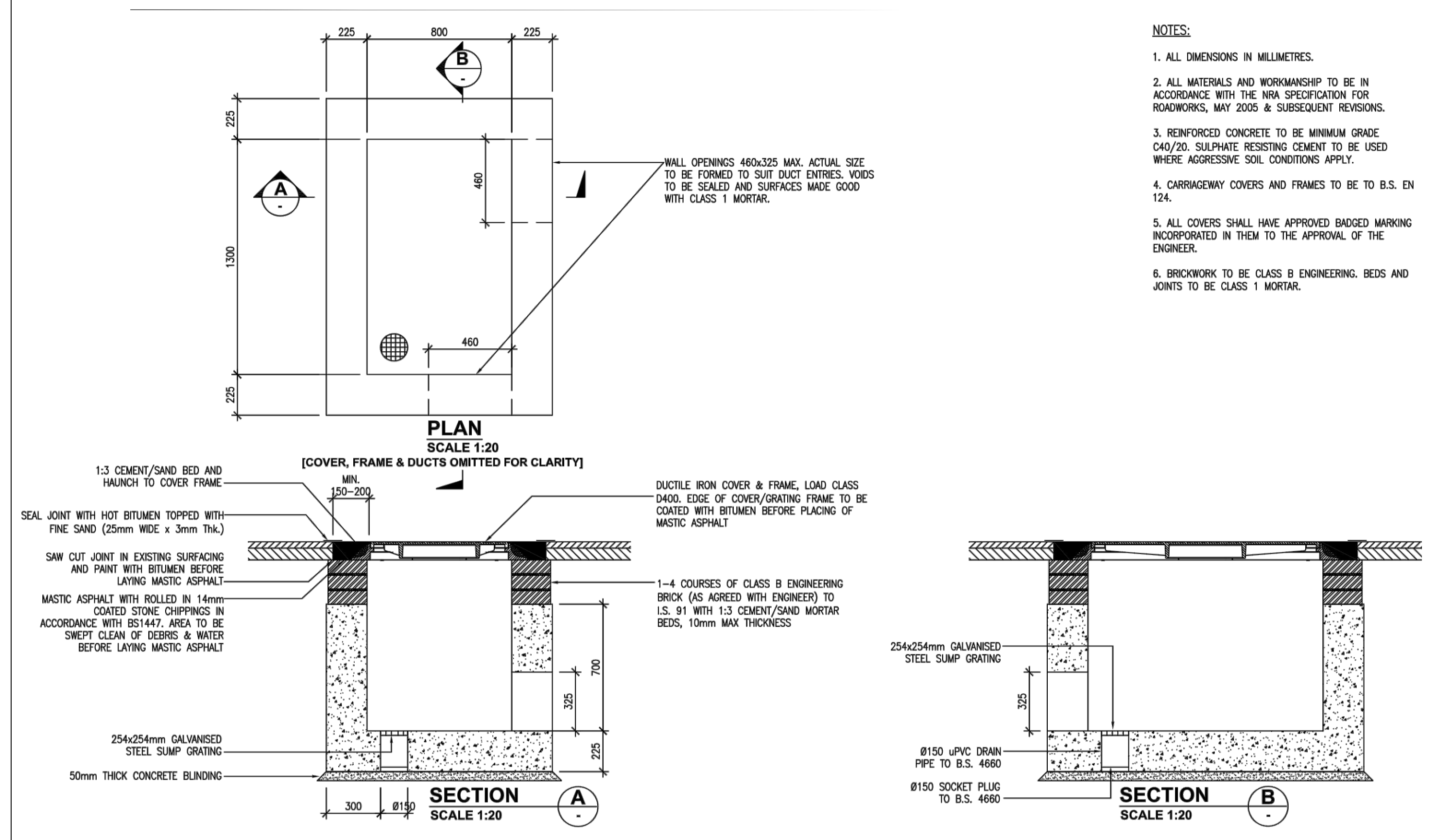
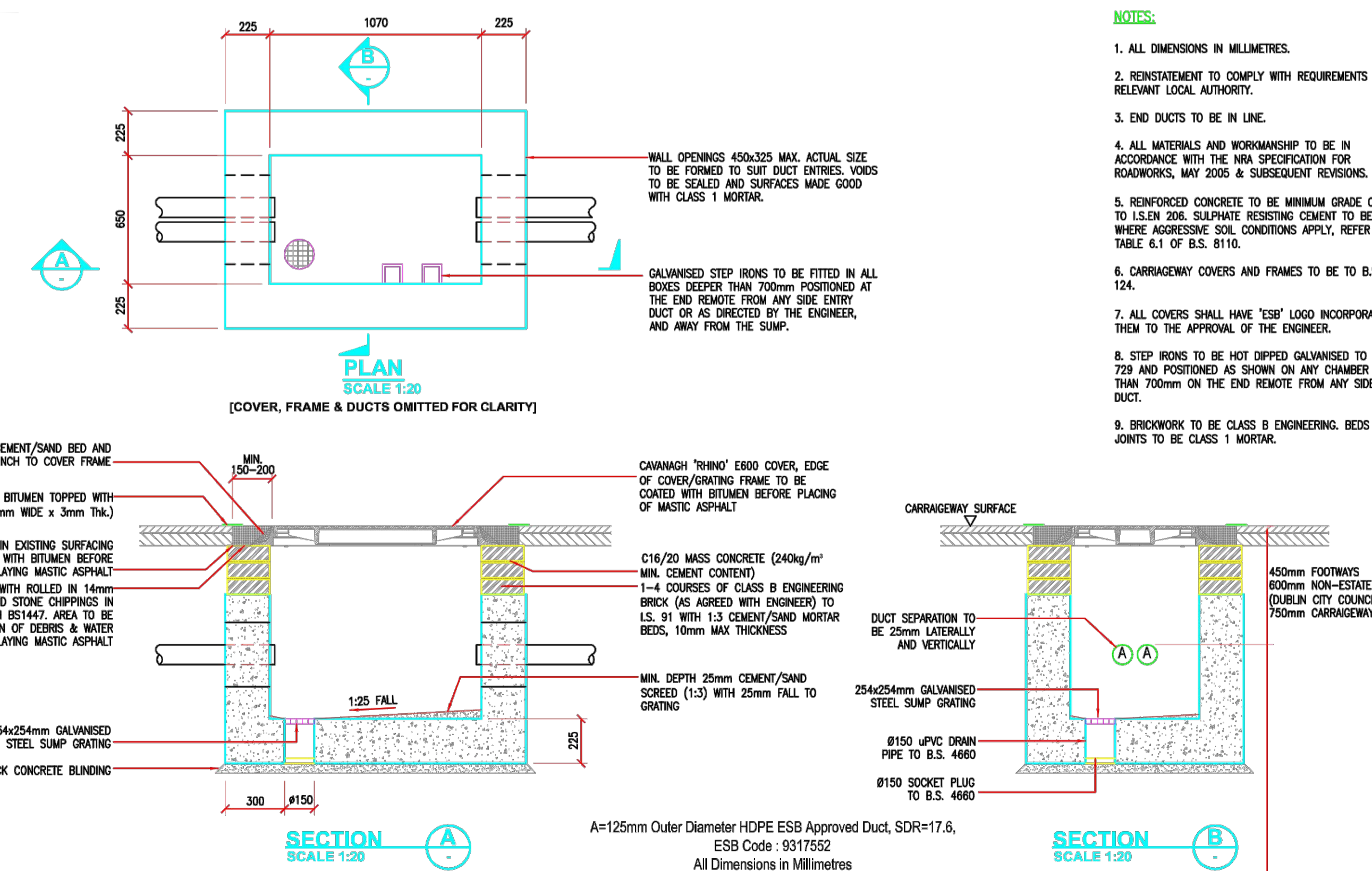
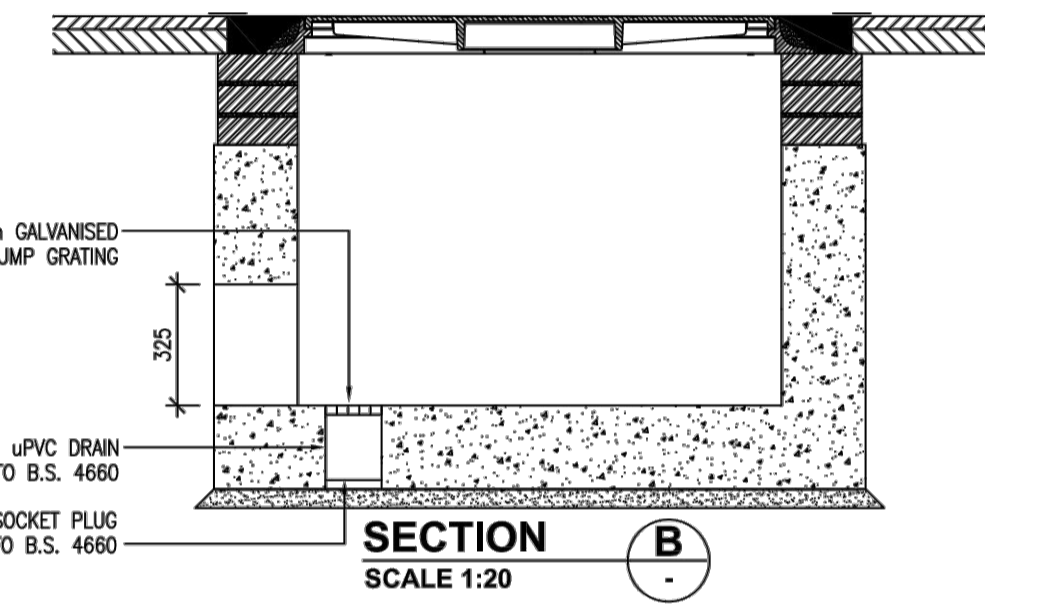


TYPICAL DETAILS FOR STEEL PLATE  
SCALE 1:50



1300 x 800 LINK BOX CHAMBER GENERAL ARRANGEMENT  
SCALE 1:20

- NOTES:
1. ALL DIMENSIONS IN MILLIMETRES.
  2. ALL MATERIALS AND WORKMANSHIP TO BE IN ACCORDANCE WITH THE NRA SPECIFICATION FOR ROADWORKS, MAY 2005 & SUBSEQUENT REVISIONS.
  3. REINFORCED CONCRETE TO BE MINIMUM GRADE C40/20. SULPHATE RESISTING CEMENT TO BE USED WHERE AGGRESSIVE SOIL CONDITIONS APPLY.
  4. CARRIAGEWAY COVERS AND FRAMES TO BE TO B.S. EN 124.
  5. ALL COVERS SHALL HAVE APPROVED BADGED MARKING INCORPORATED IN THEM TO THE APPROVAL OF THE ENGINEER.
  6. BRICKWORK TO BE CLASS B ENGINEERING. BEDS AND JOINTS TO BE CLASS 1 MORTAR.



NOTES:

1. ALL DIMENSIONS IN MILLIMETRES.
2. REINSTATEMENT TO COMPLY WITH REQUIREMENTS OF THE RELEVANT LOCAL AUTHORITY.
3. END DUCTS TO BE IN LINE.
4. ALL MATERIALS AND WORKMANSHIP TO BE IN ACCORDANCE WITH THE NRA SPECIFICATION FOR ROADWORKS, MAY 2005 & SUBSEQUENT REVISIONS.
5. REINFORCED CONCRETE TO BE MINIMUM GRADE C32/40 TO I.S. EN 206. SULPHATE RESISTING CEMENT TO BE USED WHERE AGGRESSIVE SOIL CONDITIONS APPLY, REFER TO TABLE 6.1 OF B.S. 8110.
6. CARRIAGEWAY COVERS AND FRAMES TO BE TO B.S. EN 124.
7. ALL COVERS SHALL HAVE 'ESB' LOGO INCORPORATED IN THEM TO THE APPROVAL OF THE ENGINEER.
8. STEP IRONS TO BE HOT DIPPED GALVANISED TO B.S. 729 AND POSITIONED AS SHOWN ON ANY CHAMBER DEEPER THAN 700mm ON THE END REMOTE FROM ANY SIDE ENTRY DUCT.
9. BRICKWORK TO BE CLASS B ENGINEERING. BEDS AND JOINTS TO BE CLASS 1 MORTAR.

C2 COMMUNICATIONS CHAMBER GENERAL ARRANGEMENT  
SCALE 1:20

P06	FOR PLANNING	ZS	HF	21/02/2020
Rev	Description	Drawn	Checked	Date

Clifton Scannell Emerson Associates Limited  
Consulting Engineers,  
Seafor Lodge,  
Castledawson Avenue,  
Blackrock, Co. Dublin,  
Ireland, A94 P768  
T: +353 1 288 5006  
F: +353 1 283 3466  
E: info@csea.ie  
W: www.csea.ie

Client: CRUISERATH 220 kV SUBSTATION & TRANSMISSION LINE  
Project: TYPICAL DETAILS FOR STEEL PLATE, LINK BOX & C2 CHAMBERS  
Dwg. Title: LT Date: 15/08/2019 17\_014  
Checked By: HF Scale: NTS @ A1 CSEA Job No.  
Project Code: Originator: Zone/Phase: Level: Type: Role: Dwg. No.  
PROJ\_G - CSE - 00 - XX - DR - C - 2555  
S2 FOR INFORMATION  
Status Code: Suitability Description  
P06 PLANNING  
Revision: Project Status